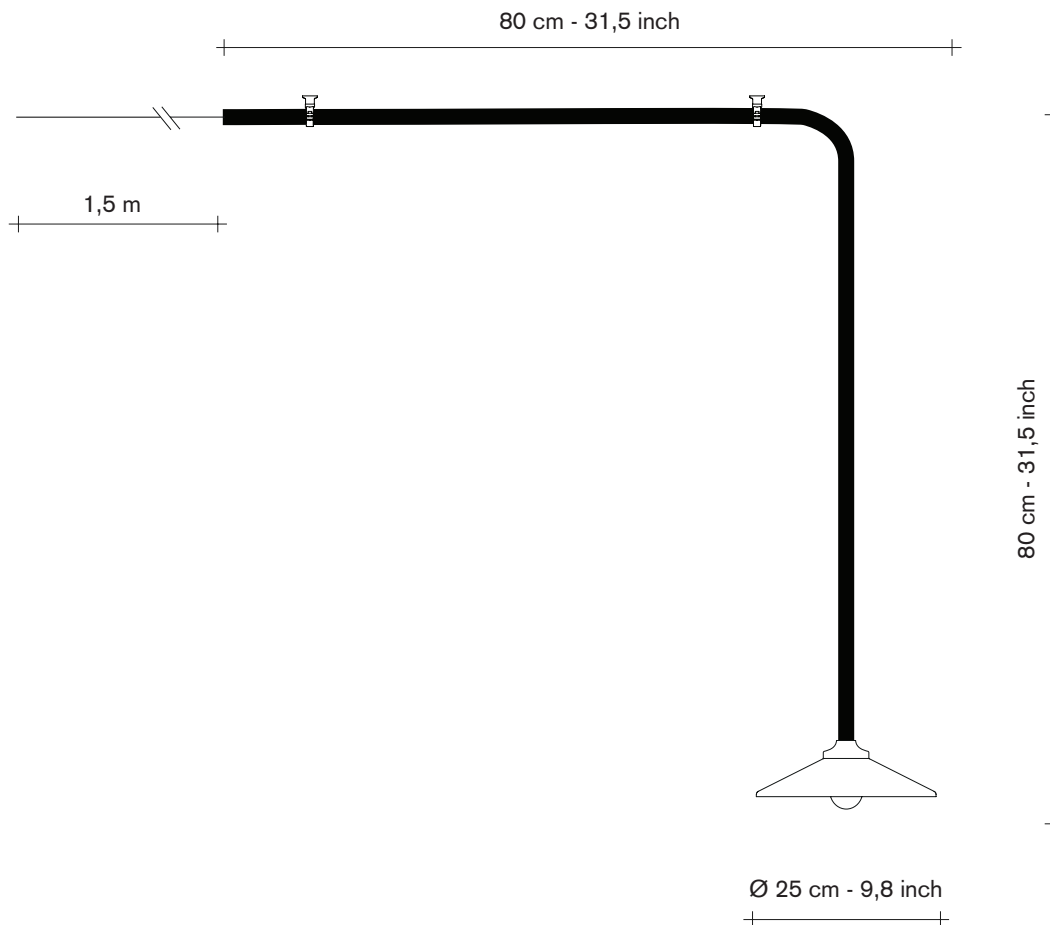


instruction manual

ceiling lamp n°1

V9018001MD (brass) / V9018001ZD

valerie_objects



for indoor use only, where direct contact with water is impossible



the armature can be used in combination with a dimmer. consult the sales outlet for the correct type



protection class 1:
the fitting must be earthed



this luminaire was designed to work only with the indicated voltage



the maximum wattage indicated in each lighting unit, for example, must not be exceeded



observe the indicated minimum distance between the lamp and the illuminated materials/objects



not to be disposed with domestic waste in rubbish bin, bring it to a staging area for electrical waste

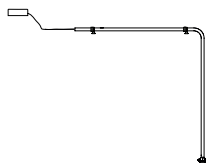
This product contains a light source of energy efficiency class F.

safety directions

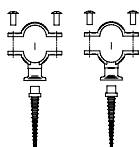
Please study the instruction manual carefully before installing or using this product. Keep this user manual for further reference / two persons needed for installation.

1. The luminaires may only be installed by authorized and qualified technicians according valid regulations for electrical installation.
2. Maintenance of the luminaires is limited to their surfaces. During maintenance no moisture can come into contact with any areas of the terminal connections or voltage control parts.
3. Take account of the minimal separation distance from other objects and the room required around the fitting.
4. If in any doubt, consult a professional, taking local installation requirements into account. Some countries stipulate that lighting may be installed only by registered installers.
5. When replacing a lamp, wait for it to cool, for a minimum of 5 minutes.
6. Clean with a clean, dry cloth or brush, use no solvents or abrasives. Avoid dampness on all electrical components.
7. Take account of all available technical information.
8. If the external cable or cord of this luminaire is damaged, it shall be exclusively replaced by the manufacturer or his service agent or a similar qualified person in order to avoid a hazard.

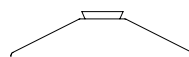
1x ceiling lamp
(frame + power cord + ceiling pot)



2x set wall brackets
(wall plugs included)



1x lamp shade



1x LED bulb silvered cap
4W - 350 lm
2700K (not dimmable)
energy class F



We recommend 2 persons to install the ceiling lamp

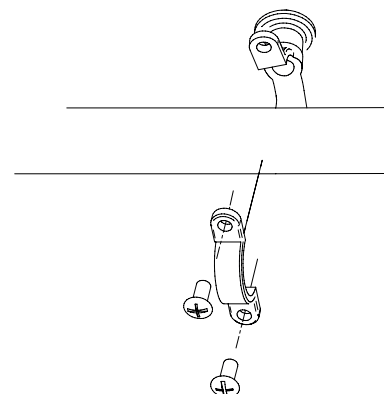
1. Assemble the two back parts of the wall bracket



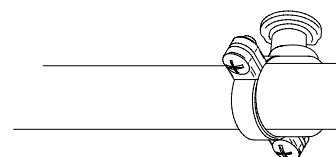
2. Drill two holes with the requested diameter for the appropriate wall plugs according your type of ceiling



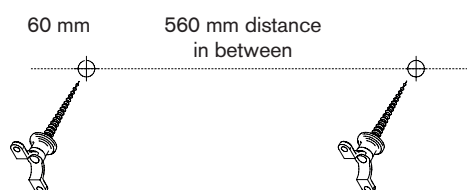
4. Screw careful the front part of the wall bracket on its backpart. The lamp fixture fits into the two brackets.
* Recommended to tightend the brackets by hand.



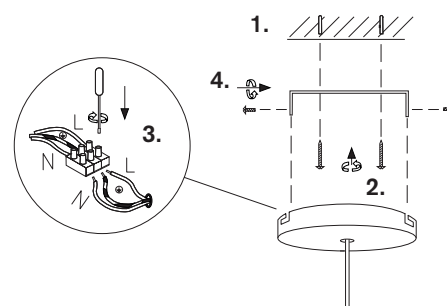
5. Take care:
- do not screw the wall brackets tight
- align careful the correct vertical hanging position
- tight both brackets



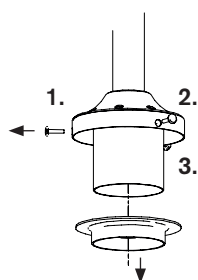
3. Screw the back part of the wall bracket into the wall plug (by hand)



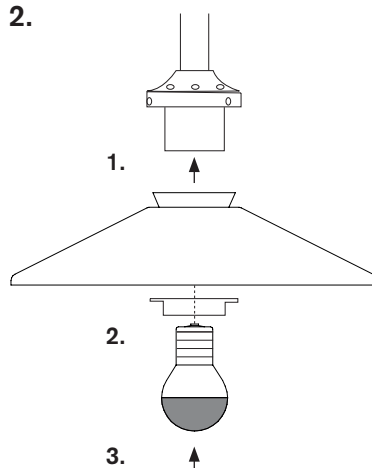
6. Installation of the ceiling pot



1.



2.



3.

